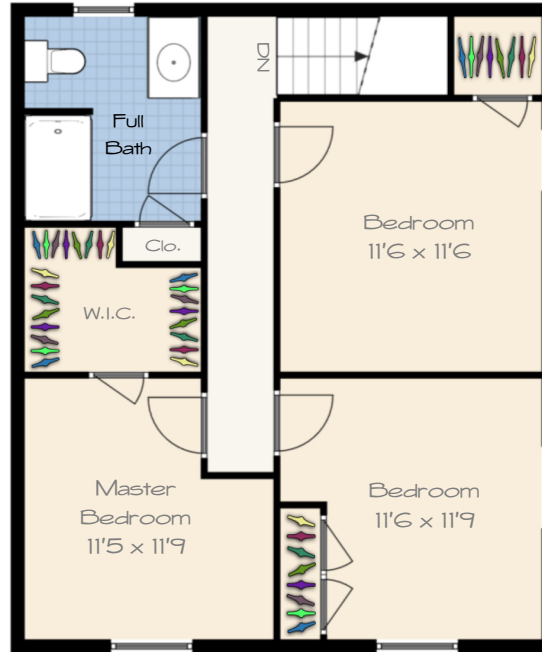
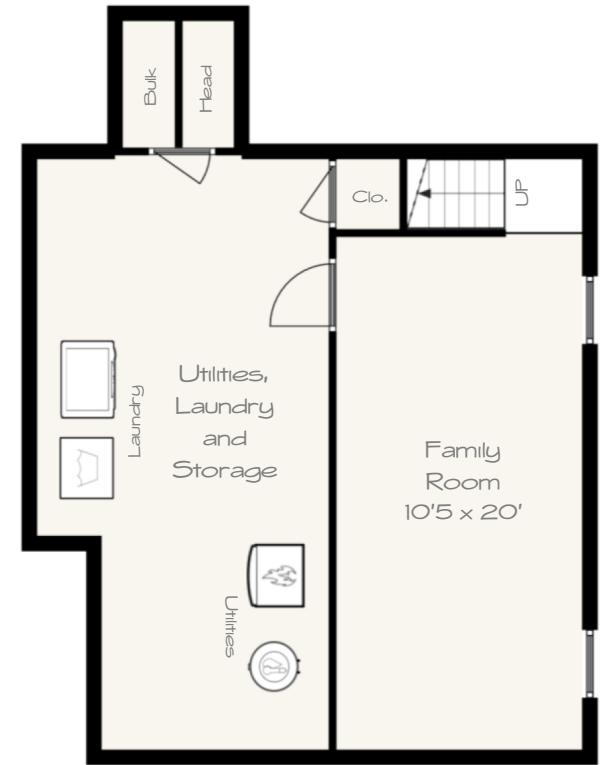




FIRST FLOOR



SECOND FLOOR



LOWER LEVEL

368 UNION STREET

FRANKLIN, MASSACHUSETTS

Tracy Kok



TRACY KOK
 508.463.6481 direct
 tkok@keithbrokerage.com
 TracyRealtyServices.com

APPROXIMATE SQUARE FOOTAGE:

FIRST FLOOR:	643 SF
SECOND FLOOR:	645 SF
LOWER LEVEL:	210 SF
TOTAL SQUARE FOOTAGE:	1,498 SF

*Square footage is approximate. Buyer to perform due diligence to verify.

All dimensions and square footage are approximate. Not drawn to scale. Floor plans are presented for marketing purposes only. Buyer should perform due diligence.
 ©2021 MeetingHouse Media | 617.828.4127

